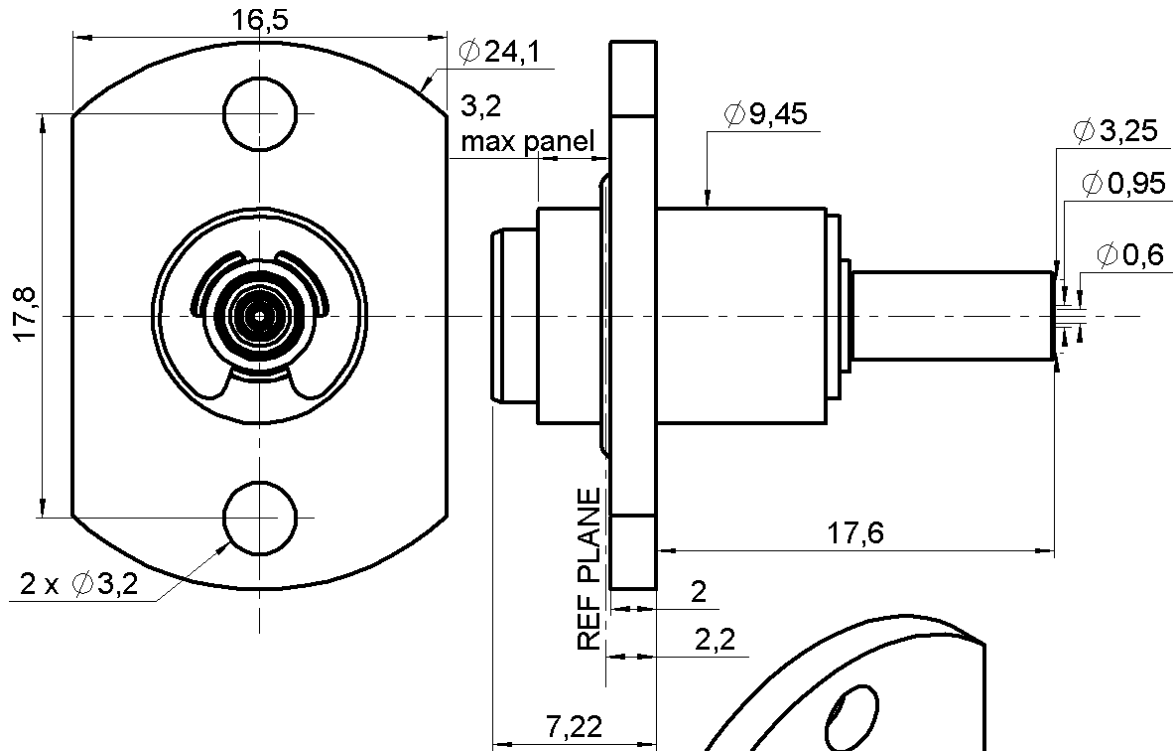


STRAIGHT FLOATING JACK COMBINATION SEAL

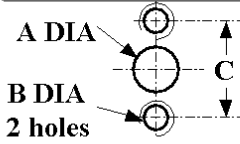
R128.250.001

CRIMP TYPE FOR 2/50S CABLE

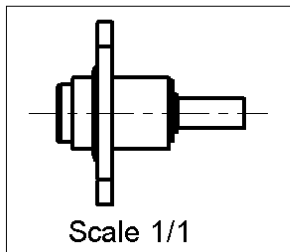
Series : BMA



PANEL CUT OUT



| | mm | |
|---|-------------|------|
| | Maxi | mini |
| A | 9.6 | 9.55 |
| B | 3.48 UNC 2B | |
| C | 17.9 | 17.7 |



All dimensions are in mm.



| COMPONENTS | MATERIALS | PLATINGS (µm) |
|----------------|------------------|------------------------|
| BODY | STAINLESS STEEL | PASSIVATED . |
| CENTER CONTACT | BERYLLIUM COPPER | GOLD 1.3 OVER NICKEL 2 |
| OUTER CONTACT | BERYLLIUM COPPER | GOLD 1.3 OVER NICKEL 2 |
| INSULATOR | PTFE | |
| GASKET | SILICONE RUBBER | |
| OTHERS PARTS | BRASS | GOLD 0.2 OVER NICKEL 2 |
| - | - | - |
| - | - | - |

Issue : 0723 E

In the effort to improve our products, we reserve the right to make changes judged to be necessary.



STRAIGHT FLOATING JACK COMBINATION SEAL
CRIMP TYPE FOR 2/50S CABLE

R128.250.001

Series : BMA

PACKAGING

| Standard | Unit | Other |
|----------|------|-------------------|
| 1 | | Contact us |

SPECIFICATION

ELECTRICAL CHARACTERISTICS

| | | |
|---------------------------------|----------------------|--------------------------|
| Impedance | 50 | Ω |
| Frequency | 0-3 | GHz |
| VSWR | 1.25 + 0,0700 | x F(GHz) Maxi |
| Insertion loss | 0.03 | \sqrt{F} (GHz) dB Maxi |
| RF leakage | - (NA) | - F(GHz)) dB mini |
| Voltage rating | 250 | Veff Maxi |
| Dielectric withstanding voltage | 750 | Veff mini |
| Insulation resistance | 5000 | M Ω mini |

CABLE ASSEMBLY

| Stripping | a | b | c | d | e | f |
|-----------|------|------|------|------|------|------|
| mm | 2,00 | 10,0 | 14,0 | 0,00 | 12,0 | 0,00 |

Assembly instruction :

Recommended cable(s)
 RG 178
 RG 196
 RG 178 LC
 KX 21

Cable retention

- pull off **40** N mini
- torque **NA** N.cm

MECHANICAL CHARACTERISTICS

| | | |
|----------------------------|-----------|-----------|
| Center contact retention | | |
| Axial force – Mating end | 27 | N mini |
| Axial force – Opposite end | 27 | N mini |
| Torque | NA | N.cm mini |

TOOLING

| Part Number | Description | Hexagon |
|--------------|------------------------------|---------|
| . | . | . |
| R282.293.000 | CRIMPING TOOL M22520/5-01 | - |
| R282.211.000 | CRIMPING TOOL | 3.25 |
| R282.235.003 | CRIMPING DIES | 3.25 |

| | | |
|--------------------|---------------|------|
| Recommended torque | | |
| Mating | NA | N.cm |
| Panel nut | NA | N.cm |
| Clamp nut | NA | N.cm |
| A/F clamp nut | 0,0000 | mm |

| | | |
|-------------|---------------|-------------|
| Mating life | 1000 | Cycles mini |
| Weight | 0,0000 | g |

OTHERS CHARACTERISTICS

-

ENVIRONMENTAL

| | | |
|-----------------------|-----------------|--------------|
| Operating temperature | -65/+125 | $^{\circ}$ C |
| Hermetic seal | NA | Atm.cm3/s |
| Panel leakage | 0.35 | |

Issue : 0723 E

In the effort to improve our products, we reserve the right to make changes judged to be necessary.



STRAIGHT FLOATING JACK COMBINATION SEAL

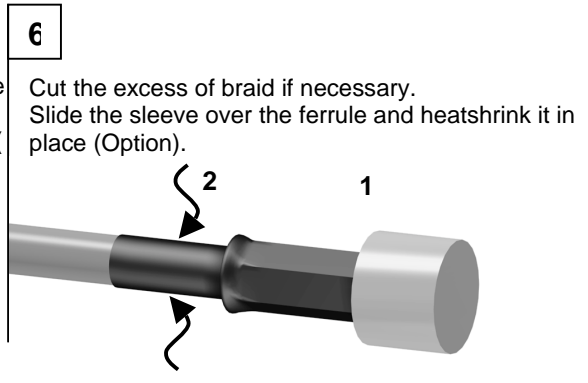
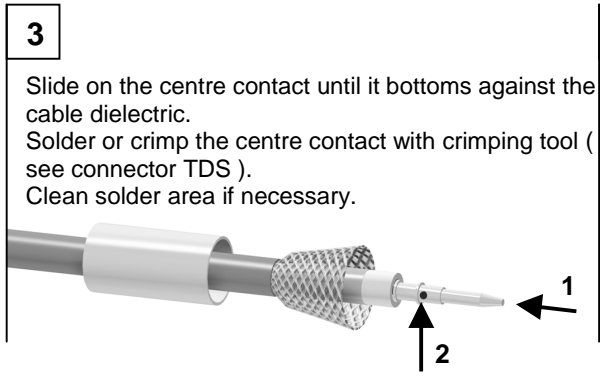
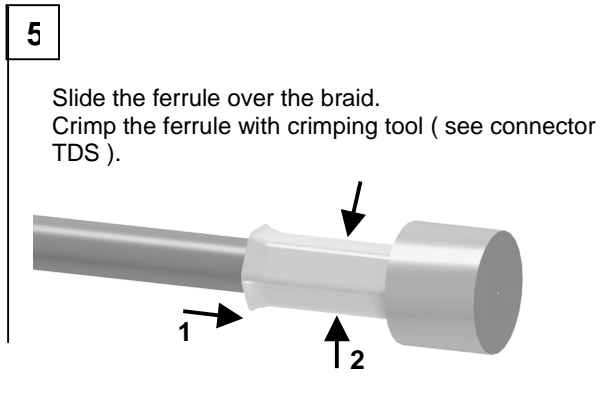
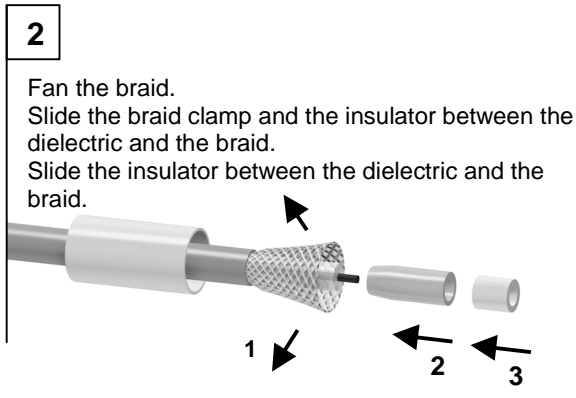
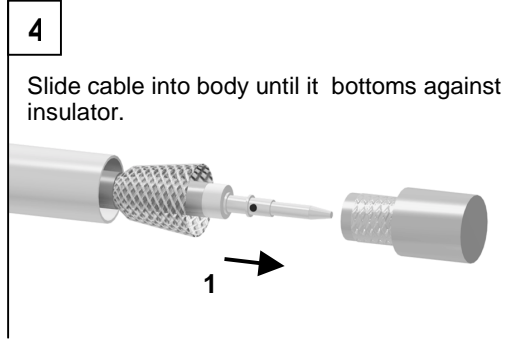
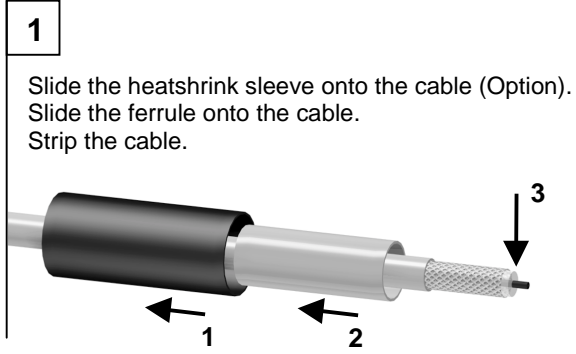
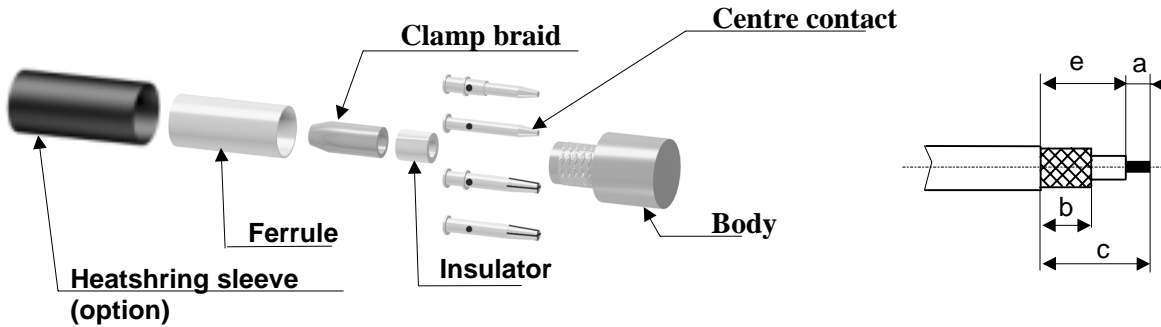
R128.250.001

CRIMP TYPE FOR 2/50S CABLE

Series : BMA

COMPONENTS

STRIPPING DIMENSIONS



Issue : 0723 E

In the effort to improve our products, we reserve the right to make changes judged to be necessary.

